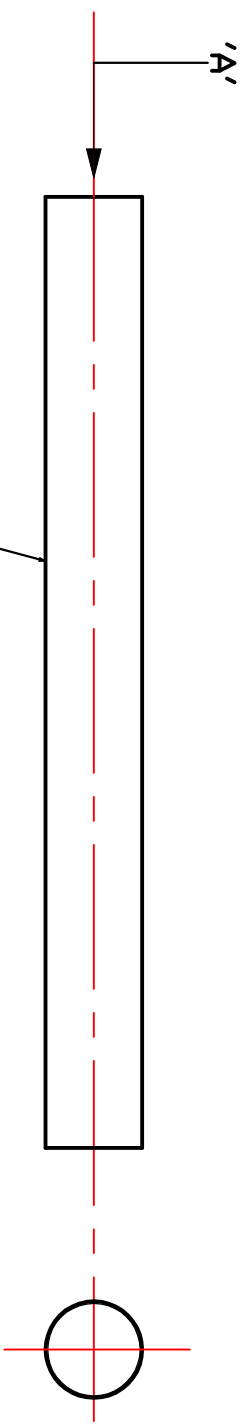
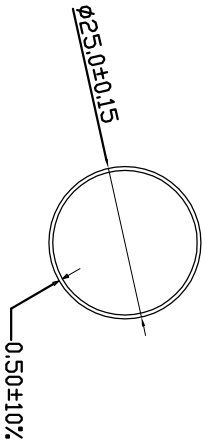


UNLESS STATED OTHERWISE - ALL DIMENSIONS/TOLERANCES AND POWDER THICKNESS WILL BE FOR ALL CUT LENGTHS SUPPLIED.  
TUBE TO BE DEBURRED ON BOTH ENDS AND FREE FROM SHARP EDGES.



$\phi 25.0\text{MM} \times 0.50\text{MM}$  WALL THICKNESS ERW STEEL TUBE.  
(WALL THICKNESS IS 0.50MM UNLESS OTHERWISE STATED)



VIEW ON ARROW 'A'

FINISH: AS DEFINED ON PURCHASE ORDER.

THE MAXIMUM HEIGHT OF THE WELD BEAD ON THE  
INTERNAL SURFACE OF THE TUBE SHALL NOT BE  
GREATER THAN 60% OF THE SPECIFIED THICKNESS

TOLERANCE ON CUT LENGTH =  
+ 3.0MM  
- 0.0

USE RING GAUGE T0096 FOR CHECKING TUBE DIAMETRE.

ROTHLEY LTD.

TITLE:  $\phi 25.0\text{MM}$  PLATED STEEL TUBE.  
DATE: 19th February 2008  
DRAWN BY: RUNDERHILL

DRAWING No: RT734  
ISSUE LEVEL: 'C'