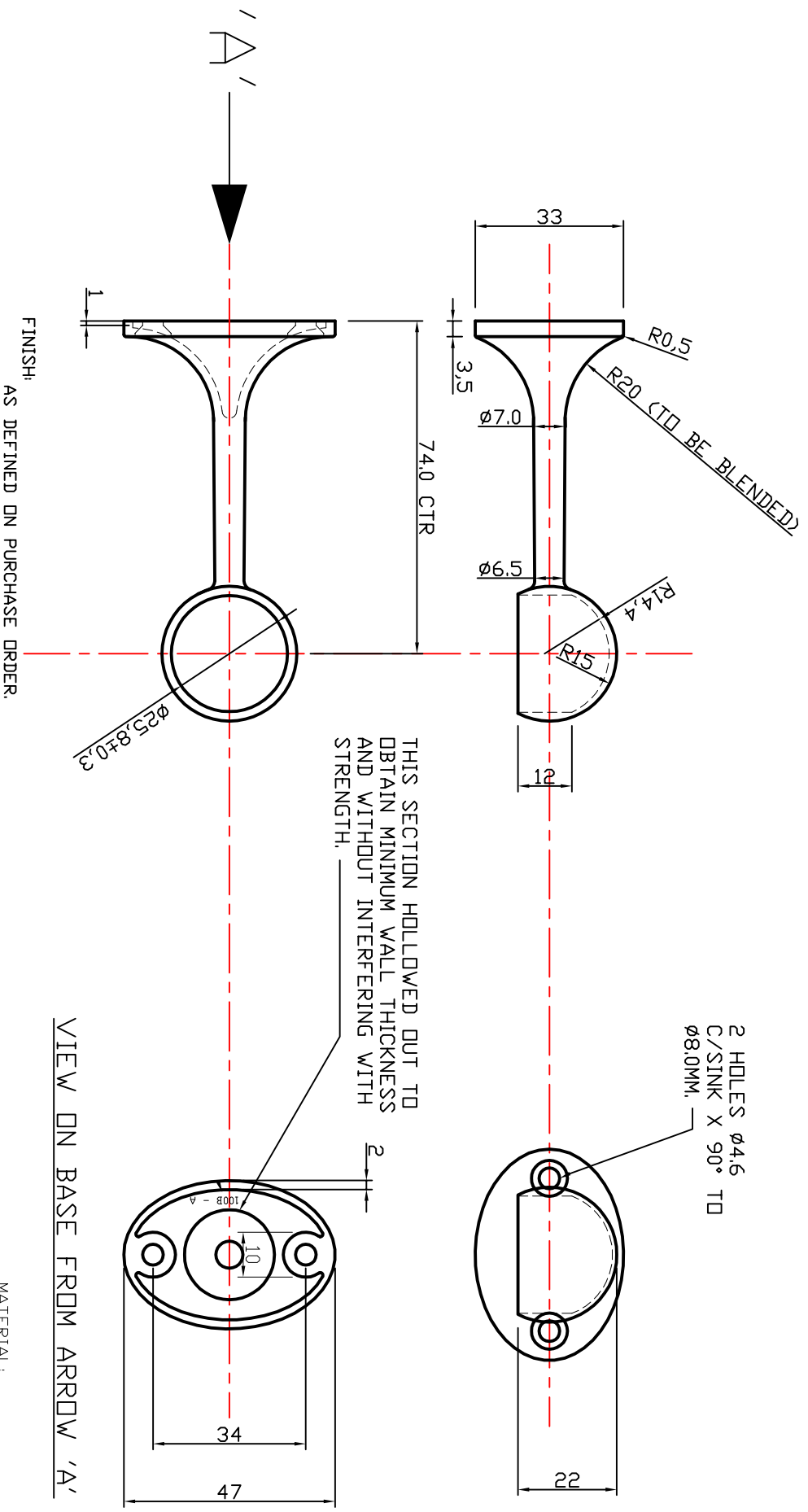


TO BE FREE FROM BURRS AND SHARP EDGES.



MATERIAL:
ZINC DIE CAST

VIEW ON BASE FROM ARROW 'A'

THIS SECTION HOLLOWED OUT TO OBTAIN MINIMUM WALL THICKNESS AND WITHOUT INTERFERING WITH STRENGTH.

2 HOLES Ø4.6
C/SINK X 90° TD
Ø8.0MM.

FINISH:
AS DEFINED ON PURCHASE ORDER.