

METER BOXES & REPAIR SOLUTIONS

www.meterboxes.co.uk



Call us on **01782 375 450** or visit meterboxes.co.uk

Meter Boxes

MCL Utility are the UK market leaders, providing our customers with the most complete and trusted range of meter housing products. From single replacement meter box doors, the bulk supply of domestic meter boxes through our stockists and purpose designed large walk-in kiosks; we manufacture and supply them all.



Technical Expertise

MCL's Mitras™ meter box range is the largest and most comprehensive available in the UK and Ireland. Since 1975, we estimate over 15 million Mitras™ gas and electric meter boxes have been supplied and installed into UK housing, factories, commercial and public buildings, hospitals and schools.

With over 25 years experience in the manufacture, supply and distribution of approved domestic meter housings and industrial and commercial kiosks, MCL are the gas and electricity industry's No 1 supplier of choice.

Standards

MCL's Mitras™ meter boxes are approved and installed by all major utility companies and house builders. MCL manufacture and supply domestic gas meter boxes to BS8499: Specification for domestic gas meter boxes, formally National Grid standard PRS8, electricity meter boxes to BS8567: Specification for outdoor domestic meter cupboards, formally ESI (Electricity Standards Institute) standard 12-3, the patented Gas Care Services GC™ range of engineered kiosks and larger range of GC™ walk-in housings comply with GISPRS35:2001 and Securbilt™ security kiosks are certified to LPCB1175 Iss.7 SR3 by BRE Global.

Environmental, Health & Safety

MCL have developed and implemented an integrated management system, which addresses the Quality, Health and Safety and Environmental aspects of the business. The system is regularly measured and monitored and reviewed by senior management.

We undertake site health, safety and environmental surveys at all our group sites on a regular basis and include H&S and environmental controls on our site working, through our combined risk assessed method statements.

Continuous improvement initiatives are undertaken to improve the business, drive manufacturing productivity, product improvement, environmental and safety initiatives.

Accreditations

MCL are certificated and audited by the British Standards Institution, BSI to ISO 9001:2008. The LPCB mark and listings signify that enclosure products have been tested and approved by the Loss Prevention Certification Board. MCL has products approved and listed within The LPCB Red Book. To achieve this prestigious approval, our products have undergone rigorous testing and our manufacturing sites are subjected to annual audits. MCL has achieved the Achilles UVDB Verify A rating, which demonstrates compliance to the health, safety, environment and quality standards required by the utility industry.



Domestic Meter Boxes

Gas Meter Boxes

Electricity Meter Boxes

Pages 1 - 6

1 - 3

4 - 6

Industrial/Commercial Meter Housings

Gas Meter Housings

Electricity Meter Housings

Gas Walk-In Kiosks and GRP Kiosks

Pages 7 - 13

7 - 12

12

13

Meter Box Repair Solutions

Replacement Doors:

- Gas

- Electricity

Cover & Overboxes

Keys & Fixings

Pages 14 - 29

14 - 22

14 - 18

19 - 22

23 - 28

29 - 30

Corporate Overview: Who We Are

Pages 31 - 32

Domestic Meter Boxes

Gas Meter Boxes

The complete Mitras™ gas meter box range is specified and approved for use by National Grid and all other national and independent gas transporters for new domestic meter installations.

Mitras™ meter boxes comply with BS8499:2009 Specification for domestic gas meter boxes and meter brackets and are available in many different designs including recessed, surface mounted, semi-buried and universal.

Recessed, or 'built-in', boxes are the most commonly used model for new house builds, housing all domestic U6 and G4 meters. MCL also manufactures a recessed version, to Bord Gais specification, for use in the Republic of Ireland. The surface mounted box is the easiest to install and, with a removable cover, is easy to replace if damaged over time. There are three versions of the semi-buried gas meter box available which are meter specific, the version required depends on who the gas connector is (check the data sheet before installing). The universal range of gas meter boxes can be surface mounted, floor standing or partially buried in the ground.

Mitras™ Brown Recessed Gas Meter Box

Model Number: G01134

Overall size (mm): 434 W x 600 H x 216 D

Brickwork opening (mm): 365 W x 527 H x 155 D

Manufactured in a milk chocolate brown colour, this version of the recessed gas meter box is less obtrusive against red brick houses. Complies with BS8499:2009 Specification for domestic gas meter boxes and meter brackets.



Mitras™ Recessed Gas Meter Box

Model Number: G01024

Overall size (mm): 434 W x 600 H x 216 D

Brickwork opening (mm): 365 W x 527 H x 155 D

Known also as model G01034 by our stockists, the recessed gas meter box houses all domestic U6 and G4 meters and is designed to mirror to standard recessed electric meter box. This box is fully approved to National Grid Gas specifications. Complies with BS8499:2009 Specification for domestic gas meter boxes and meter brackets.



ROI/Bord Gais Recessed Gas Meter Box

Model Number: G03001

Overall size (mm): 408 W x 595 H x 210 D

Brickwork opening (mm): 365 W x 535 H x 150 D

This meter box is white and includes the meter bracket. It is used to house all current G4 or U6 gas meter used within the Bord Gais area and complies with Bord Gais specification DO/DS/S/MB/002.



Mitras™ Semi-Buried Gas Meter Box

Model Number: G60039

Overall size (mm): 405 W x 415H x 355 D

An unobtrusive brown meter box that is designed to be partially buried in the ground. Developed to house the lower cost metal cased U6 and G4 meters when used with a water resistant seal.

This meter box is fully approved by Sensus Metering, Krom Schroeder, GTC, IPL, Core Utilities. Complies with BS8499:2009 Specification for domestic gas meter boxes and meter brackets.



Connect Semi-Buried Gas Meter Box

Model Number: G60055

Overall size (mm): 415 W x 400 H x 400 D

This model was historically fitted by Connect Utilities who have now specified the Mitras™ semi-buried meter box G60039 for new installations. This design of box is still available through our stockists. Complies with BS8499:2009 Specification for domestic gas meter boxes and meter brackets.



National Grid Semi-Buried Gas Meter Box

Model Number: G60032

Overall size (mm): 478 W x 410 H x 315 D

An unobtrusive brown meter box that is designed to be partially buried in the ground. This model was commissioned by National Grid Gas to house the Itron (formerley Actaris) TVI plastic cased meter. Also known as the 'wet' box, the G60032 is specified for use with the Elster 'smart' domestic meter when fitted using a bracket.

This meter box is fully approved to National Grid Gas specification. Complies with BS8499:2009 Specification for domestic gas meter boxes and meter brackets.



Mitras™ MK2 Surface Mounted Gas Meter Box

Model Number: G70036

Overall size (mm): 408 W x 503 H x 224 D

Completed with back plate and cover

Known also as model G70038 by our stockists, the Mk2 surface mounted gas meter box is principally used in the pipe and meter replacement programme and is popular for use in conversions, or for when there is no cavity to build into. Complies with BS8499:2009 Specification for domestic gas meter boxes and meter brackets.



Domestic Meter Boxes

Mitras™ Multibox Universal Gas Meter Box

Model Number: G60034

Overall size (mm): 460 W x 550 H x 300 D

The Multibox is a larger box and can house all domestic gas meters, most pre-payment meters and some MP installations and incorporates a meter bracket. Complies with BS8499:2009 Specification for domestic gas meter boxes and meter brackets.



Mitras™ Unibox™ Universal Gas Meter Box in Brown

Model Number: G02013

Overall size (mm):

The Unibox™ accepts all front facing, top angled or latest design pre-payment meters and has a choice of inlet and outlet positions and incorporates a meter bracket. Complies with BS8499:2009 Specification for domestic gas meter boxes and meter brackets.



Mitras™ Unibox™ Universal Gas Meter Box in White

Model Number: G02014

Overall size (mm): 480 W x 500 H x 290 D

The Unibox™ accepts all front facing, top angled or latest design pre-payment meters and has a choice of inlet and outlet positions and incorporates a meter bracket. Complies with BS8499:2009 Specification for domestic gas meter boxes and meter brackets.



Boundary Gas Meter Box

Model Number: U6FS

Overall size (mm): 500 W x 560 H x 275 D

A free-standing gas meter housing that allows the unobtrusive installation of a domestic U6 meter away from the house and incorporates a meter bracket. Complies with BS8499:2009 Specification for domestic gas meter boxes and meter brackets.



Electricity Meter Boxes

MCL's Mitras™ Meter Box range is the largest and most comprehensive available in the UK and Ireland. MCL manufacture and supply electricity meter boxes to BS8567:2012 Specification for outdoor electricity meter cupboards. Our meter boxes are approved and installed by all major utility companies and house builders.

The most commonly used model for new house builds, the recessed electricity meter boxes house all domestic electricity meters with a larger version available for 3-phase supply. A Slimline version is available for where wall space is restricted, a shallow version used mainly for timber framed buildings, a 'fire-retardant' version and an ESB approved version for use in the Republic of Ireland. The easiest to install, the surface mounted electricity meter boxes are suitable for domestic electricity meters, with a larger version for 3-phase meter installations.

Mitras™ Brown Recessed Electricity Meter Box

Model Number: M01126 (EB1)

Overall size (mm): 409 W x 595 H x 210 D

Brickwork opening (mm): 365 W x 535 H x 150 D

Manufactured in a milk chocolate brown colour, this version of the standard recessed electric meter box is less obtrusive against red brickwork than the standard white box. Built to the same specification as the universal version M01023, this meter box can be used in any area of the UK. Hockey stick only available in white or black, available from our stockists. Replacement door is the M00041. Complies with BS8567:2012 Specification for outdoor electricity meter cupboards.



Mitras™ Recessed Electricity Meter Box

Model Number: M01023 (EB1)

Known also as model M01026 by our stockists, the most popular electric meter box, the standard recessed electric meter box houses any domestic electric meter and is designed to mirror the standard recessed gas meter box. With a variety of cable entry positions, this universal version can be used in any area of the UK (except Manweb area). Complies with BS8567:2012 Specification for outdoor electricity meter cupboards. Fire retardant version M02025 is available from our stockists.



Mitras™ Medium Manweb Recessed Electricity Meter Box

Model Number: M35047 (EB2)

Overall size (mm): 485 W x 685 H x 210 D

Brickwork opening (mm): 405 W x 610 H x 150 D

Larger than the standard box, as usually required in the Manweb electricity area and used in Northern Ireland, the Medium recessed electric meter box houses any domestic electric meter. Cable entry can only be through the building cavity as the external protrusion is smaller than the standard box. Complies with BS8567:2012 Specification for outdoor electricity meter cupboards.



Domestic Meter Boxes

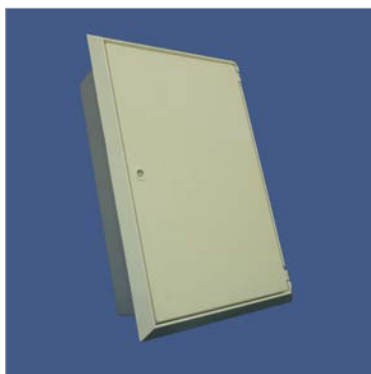
Mitras™ Medium Recessed ESB ROI Electricity Meter Box

Model Number: M35044

Overall size (mm): 485 W x 685 H x 210 D

The electricity meter box of choice in the Republic of Ireland and fully conforms to ESB National Networks code of practice, 4th edition 2008.

This meter box differs in specification to the 'Manweb' box of the same size which is widely used in Northern Ireland. Complies with BS8567:2012 Specification for outdoor electricity meter cupboards.



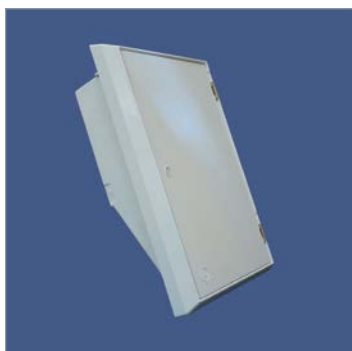
Mitras™ Shallow Recessed Electricity Meter Box

Model Number: M44001

Overall size (mm): 415 W x 615 H x 190 D

Brickwork opening (mm): 345 W x 535 H x 120 D

Similar in size and appearance to the standard box, the shallow box has a depth of just 120mm making it suitable for most timber frame developments and has a moulded in ramp for the entry of the cabling and cut-out mounting. Not suitable for some Distribution Network Operators, please check before purchase. Complies with BS8567:2012 Specification for outdoor electricity meter cupboards.

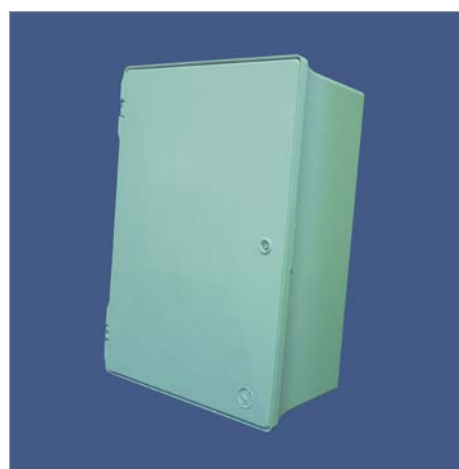


Mitras™ MK3 Surface Mounted Electricity Meter Box

Model Number: M06004 (EB6)

Overall size (mm): 400 W x 560 H x 215 D

Used primarily for conversions where it is not appropriate to build into the wall. Hockey stick available from our stockists only. Replacement door is the M00034. Complies with BS8567:2012 Specification for outdoor electricity meter cupboards.



Mitras™ Slimline Recessed Electricity Meter Box

Model Number: M35075 (EB4)

Overall size (mm): 279 W x 828 H x 210 D

Brickwork opening (mm): 235 W x 770 H x 150 D

Taller but narrower than the standard box, being just one brick wide, this box is popular with developers of smaller houses with limited wall space available for meter housings and is extensively used by Geo. Wimpey Homes. Not suitable for some Distribution Network Operators, please check before purchase. Complies with BS8567:2012 Specification for outdoor electricity meter cupboards.



Mitras™ 3-Phase Recessed Electricity Meter Box

Model Number: M00036

Overall size (mm): 550 W x 770 H x 210 D

Brickwork opening (mm): 475 W x 700 H x 145 D

Specifically designed to house a 3-phase meter installation, the large recessed electric meter box is manufactured to ESI Standard 12-3 for external use only. Exclusively, this design has the versatility of cable entry through the wall cavity, as previous, or surface entry through the specially designed architrave. Complies with BS8567:2012 Specification for outdoor electricity meter cupboards.



Mitras™ Large 3-Phase Surface Mounted Electricity Meter Box

Model Number: M00045

Overall size (mm): 550 W x 780 H x 225 D

Designed specifically to house a 3-phase supply. Complies with BS8567:2012 Specification for outdoor electricity meter cupboards.



Hockey Sticks

Model Number: 208037 / 208038

Overall size (mm): 1700 L x 38mm inner diameter

Available from our stockists in white or black, hockey sticks are used to carry and protect the electricity supply cable from the cable duct into the meter box. For use with most domestic electricity meter boxes, manufactured from uPVC pipe, comply with ENAT 12-24 Class 3.



Meter Box Colour

Whilst every effort has been made to display a true likeness of our products within this brochure, the actual colour of our products may vary from that shown here.

Installation of Meter Boxes

Our products contain fitting instructions for the basic fitting of the meter box only, they do not include fitting instructions for the meter and ancillary products, or for any form of supply connection. If you are unsure about the correct fitting of the meter box, please do not attempt to fit it.

Building and Construction Products

Whilst we endeavour to achieve a high quality finish, due to the nature of our materials and the manufacturing and storage processes, our products may exhibit small surface imperfections that do not affect their performance.

Industrial / Commercial Meter Housings

Gas Meter Housings

For industrial and commercial installations, the patented Gas Care Services GC™ range of engineered kiosks and larger range of GC™ walk-in housings comply with GISPRS35 2011: Gas Industry standard for GRP housings for Gas regulators and associated operation equipment, formally National Grid standard PRS35 and are used extensively by utility companies as the kiosk of choice.

The Gas Care Services GC™ range of standard kiosks and housings are designed to house industrial and commercial meter installations for U16 meters up to U160/compact rigs and modules. Each model is designed specifically around the size of the relevant commercial meter and ancillary equipment such as the regulator (LP or MP) and is available ex-stock in British Racing Green 14C39 or any non-metallic colour of choice to order. A textured 'anti-graffiti' finish is becoming the preferred style, this too is available in any non-metallic colour to order. Details and a drawing of the concrete base to be laid for free-standing models can be found on the datasheet at www.meterboxes.co.uk.

Model	Type of Installation	Meter	Pressure: L = Low M = Medium / Intermediate	Length (mm)	Depth (mm)	Height (mm)	FAV (%)
GC2	Wall Mounted	U16	L	650	400	650	8.5
GC2FS	Freestanding	U16	L & M	730	425	830	9.2
GC2MP	Wall Mounted	U16MP	M	690	360	850	8.0
GC3	Wall Mounted	U25	L	900	360	850	8.5
GC4	Freestanding	U16, U25	L & M	1000	540	960	8.5
GC4 Plus	Freestanding	U40	M	1200	750	1200	8.4
GC5	Freestanding	U65	L & M	1475	750	1350	8.1
GC6LP	Freestanding	U65, U100, compact rigs & modules	L	1600	850	1450	8.7
GC6MP	Freestanding	U65, U100, compact rigs & modules	M	1600	850	1450	35.0
GC6EXPL	Freestanding	U65, U100, compact rigs & modules	L	1600	850	1450	8.7
GC7LP	Freestanding	U65, U100, compact rigs & modules	L	1600	850	1595	8.7
GC7MP	Freestanding	U65, U100, compact rigs & modules	M	1600	850	1595	35.0
GC7EXPL	Freestanding	U65, U100, compact rigs & modules	L	1600	850	1595	8.7
GC7+LP	Freestanding	U65, U100, compact rigs & modules	L	1600	850	1750	8.7
GC7+MP	Freestanding	U65, U100, compact rigs & modules	M	1600	850	1750	35.0
GC7+ EXPL	Freestanding	U65, U100, compact rigs & modules	L	1600	850	1750	8.7
GC8MP	Freestanding	compact rigs & modules	L & M	2400	1200	1800	6.6

GC2

Product Code: IS5200

Overall size (mm): 650 W x 400 D x 650 H

The GC2 is a wall mounted housing suitable for a U16 meter, low pressure from the mains supply. This GC2 show the textured finish available.



GC2FS

Product Code: IS5201

Overall size (mm): 730 W x 425 D x 830 H

A freestanding gas kiosk suitable for a U16 (G12) gas meter, low or medium pressure from the mains supply.



GC2MP

Product Code: IS5202

Overall size (mm): 750 W x 360 D x 850 H

A wall mounted housing for a U16 (G10) gas meter, medium pressure from the mains supply.



GC3

Product Code: IS5300

Overall size (mm): 900 W x 360 D x 850 H

The GC3 is a wall mounted housing suitable for a U25 meter, low pressure from the mains supply.



Industrial / Commercial Meter Housings

GC4

Product Code: IS5400

Overall size (mm): 1000 W x 540 D x 960 H

The GC4 is a freestanding housing for a U16 or U25 meter with low or medium pressure mains supply or a U40 meter with low pressure from the mains.



GC4 Plus

Product Code: IS5401

Overall size (mm): 1200 W x 750 D x 1200 H

The GC4+ is a freestanding housing suitable for a U40 meter, medium pressure from the mains supply.



GC5

Product Code: IS5500

Overall size (mm): 1475 W x 750 D x 1350 H

The GC5 is a freestanding housing for a U65 meter, low or medium pressure from the mains supply.



GC6LP

Product Code: IS5600

Overall size (mm): 1600 W x 850 D x 1450 H

The GC6LP is a freestanding housing suitable for a U65 or U100 meter, low pressure from the mains supply and for some of the smaller compact rigs and modules.



GC6MP

Product Code: IS5602

Overall size (mm): 434 W x 600 H x 216 D

The GC6MP is a freestanding housing suitable for U65 and U100 meters, medium pressure from the mains supply.



GC6EXPL

Product Code: IS5601

Overall size (mm): 1600 W x 850 D x 1450 H

The GC6EXPL is a freestanding housing suitable for U65 and U100 meters, low pressure from the mains, and for compact rigs and modules. This model is supplied with explosion relief.



GC7LP

Product Code: IS5700

Overall size (mm): 1600 W x 850 D x 1595 H

The GC7LP is a freestanding housing suitable for U65 and U100 meters, low pressure from the mains supply, and some compact rigs and modules.



GC7MP

Product Code: IS5702

Overall size (mm): 1600 W x 850 D x 1596 H

The GC7MP is a freestanding housing suitable for U65 and U100 meters, low pressure from the mains supply, and some compact rigs and modules.



Industrial / Commercial Meter Housings

GC7EXPL

Product Code: IS5701

Overall size (mm): 1600 W x 850 D x 1750 H

The GC7EXPL is a freestanding housing suitable for U65 and U100 meters, low pressure from the mains, and for compact rigs and modules. This model is supplied with explosion relief.



GC7+LP

Product Code: IS5750

Overall size (mm): 1600 W x 850 D x 1595 H

The GC7LP is a freestanding housing suitable for U65 and U100 meters, low pressure from the mains supply, and some compact rigs and modules.



GC7+MP

Product Code: IS5752

Overall size (mm): 1600 W x 850 D x 1596 H

The GC7MP is a freestanding housing suitable for U65 and U100 meters, medium pressure from the mains supply, and for compact rigs and modules.



GC7+ EXPL

Product Code: IS5751

Overall size (mm): 1600 W x 850 D x 1750 H

The GC7EXPL is a freestanding housing suitable for U65 and U100 meters, low pressure from the mains, and for compact rigs and modules. This model is supplied with explosion relief.



GC8MP

Product Code: IS5800

Overall size (mm): 2400 W x 1220 D x 1800 H

The GC8MP is suitable for a U165 meter and for compact rigs and modules such as 9M or 11M (check size of rig before ordering).



Gas Governor Housings

Product Code: GCG55 / GCG66

Overall size (mm): 380 W x 260 D x 550 H /
510 W x 390 D x 660 H

Designed to house gas pressure reduction modules.



Electricity Meter Housings

Used primarily to house electrical equipment, the IC range, or 'roadside kiosks' have an IP rating of 54. Available ex-stock in British Racing Green 14C39, each of the most popular models is supplied with a plywood backboard and cylinder rim lock as standard.

Model	Length (mm)	Depth (mm)	Height (mm)
IC2	750	450	1250
IC6	900	550	1750
IC8	1250	450	1250
IC18	2000	550	1750



Industrial / Commercial Meter Housings

Gas Walk-in Kiosks and GRP Kiosks

GC™ Gas walk-in kiosks are used to house larger rotary meter rigs, both single and twin stream, and pressure reducing station.

Suitable for low pressure (LP), medium pressure (MP) and intermediate pressure (IP) applications, MCL's Gas walk-in kiosks are manufactured to comply with industry standard GISPRS35:2011, fire rating to BS476 Part 7 Class 1, and are available in the major gas transporters' standard sizes (mm) or non-standard dimensions if required:



Length (mm)	Depth (mm)	Height (mm)
2200	1600	2000
2600	2000	2000
3200	2200	2000
3200	2200	2150
3600	2600	2150
3600	2400	2350
4000	2600	2350
4500	2600	2350
4800	2800	2350



Length (mm)	Depth (mm)	Height (mm)
1600	1000	2200
2600	1500	2200
2800	1500	2200
3000	1500	2200
3500	2500	2200
4000	1500	2200
4200	1500	2200
4000	2500	2200



Length (mm)	Depth (mm)	Height (mm)
2200	1600	2000
2600	2000	2000
3200	2200	2000
3200	2200	2150
3600	2600	2150
3600	2400	2350
4000	2600	2350
4500	2600	2350
4800	2800	2350



Length (mm)	Depth (mm)	Height (mm)
2500	1600	2250
3000	1600	2250
3500	1600	2250
3750	2500	2250
4000	2500	2250



Length (mm)	Depth (mm)	Height (mm)
3000	2000	2200
4000	3000	2200
5000	4000	2200
5000	3000	2200
2000	1000	2200



Length (mm)	Depth (mm)	Height (mm)
2500	2500	2200
3000	1750	2200
3500	2500	2500
3000	3000	2500

GC™ Gas Walk-in kiosks are manufactured to order, after customer approval of drawings, which allows the choice of various features and options and are delivered and installed by our CSCS certified installation teams.

- External finish option of smooth, textured, brick effect or stone effect
- Internal colour options or standard white
- Any standard RAL or BS4800 non-metallic colour including standard green 14C39
- Double and single doors to suit access requirement including escape doors
- Explosion relief roof as standard
- Additional ventilation above standard 3% by floor areas (FAV) if required
- Door shoot bolt locking or pad-bolt options available

MCL custom designed kiosks offer a wide choice of fittings, finishes and unusual features with delivery and installation options suitable for the contract's circumstances. With over 35 years of experience, MCL design, manufacture and install kiosks of the highest quality primarily for the electricity, gas and water industries. MCL are amongst the first in the UK to be able to supply GRP kiosks, including complete double and single door sets, to Security Rating LPCB LPS1175 - SR2/3.



Replacement Doors : Gas

MCL have developed the most comprehensive range of upgrade and repair solutions for the Mitras™ meter boxes and for the vast majority of fitted meter boxes that are now obsolete and have been discontinued in mainstream manufacture. MCL offer a comprehensive range of replacement doors for gas meter boxes including anti-vandal aluminium lids for the semi-buried boxes.

Gas and electricity meter boxes are different in their specification so the doors must be replaced using the correct type. Check that the box is intact where the door hangs as, if not, an overbox that covers the damaged box can be fitted to avoid the costly removal and reinstallation of the meter.

Choose the correct replacement door by measuring the existing door, or door opening, if it is missing. All replacement doors are supplied with the latch and hinges fitted to the door and with a meter box key.

Description	Size	Side Hinged	Model Ref	Product Code
Door For The Mitras Recessed Gas Meter Box	383mm W x 548mm H	Right-Hand	G00016-L	IS0001
Door For The Hepworth Recessed Gas Meter Box	380mm W x 550mm H	Left-Hand	G03000	IS0069
Brown Door For The Current Gas Meter Box	383mm W x 548mm H	Left-Hand	G01039	IS0053
Door For The MK2 Surface Mounted Gas Meter Box	340mm W x 380mm H	Right-Hand	G70037	IS0006
Door For The MK1 Surface Mounted Gas Meter Box	410mm W x 210mm H	n/a	G30060	IS0002
Lid For The National Grid Semi-Buried Gas Meter Box	479mm W x 362mm L	n/a	G60033	IS0004
Door For The MK1 (British Gas) Recessed Gas Meter Box	455mm W x 539mm H	n/a	G20002	IS0022
Lid For The Connect Semi-Buried Gas Meter Box	415mm W x 440mm L	n/a	G60054	IS0030
Lid For The Mitras Semi-Buried Gas Meter Box	410mm W x 420mm D	n/a	G60040	IS0051
Aluminium Lid For The National Grid Semi-Buried Box	479mm W x 362mm L	n/a	910004	IS5004
Aluminium Lid For The Connect Semi-Buried Gas Meter Box	415mm W x 440mm L	n/a	910005	IS5005
Lid For The Multibox Gas Meter Box	460mm W x 400mm H	n/a	G60035	IS0058
Lid For The White Unibox Gas Meter Box	480mm W x 320mm H	n/a	G02019	IS0055
Lid For The Unibox Gas Meter Box	480mm W x 320mm H	n/a	G02018	IS0054
Continental Semi-buried Gas meter box lid	460mm W x 410mm D	n/a	208097	IS0076

Meter Box Repair Solutions

Door For The Mitras™ Recessed Gas Meter Box

Model Number: G00016-L **Product Code:** IS0001

Overall size (mm): 383 W x 548 H

Supplied complete with latch and pin hinges fitted.



Door For The Mitras™ Recessed Gas Meter Box

Model Number: G01039 **Product Code:** IS0053

Overall size (mm): 383 W x 548 H

Replacement door for the brown built-in gas meter box. Supplied with latch and pin hinges fitted.



Door For The Hepworth Recessed Gas Meter Box

Model Number: G03000 **Product Code:** IS0069

Overall size (mm): 380 W x 550 H



Door For The MK1 (British Gas) Recessed Gas Meter Box

Model Number: G20002 **Product Code:** IS0022

Overall size (mm): 455 W x 539 H

Supplied with latch and pin hinges fitted.



Door For The MK2 Surface Mounted Gas Meter Box

Model Number: G70037 **Product Code:** IS0006

Overall size (mm): 340 W x 380 H

Supplied complete with latch and hinges fitted. A vented design to comply with Transco PR58 regulations.



Door For The MK1 Surface Mounted Gas Meter Box

Model Number: G30060 **Product Code:** IS0002

Overall size (mm): 410 W x 210 H

Supplied complete with latch fitted and ties for fitting to the box.



Lid For The National Grid Semi-Buried Gas Meter Box

Model Number: G60033 **Product Code:** IS0004

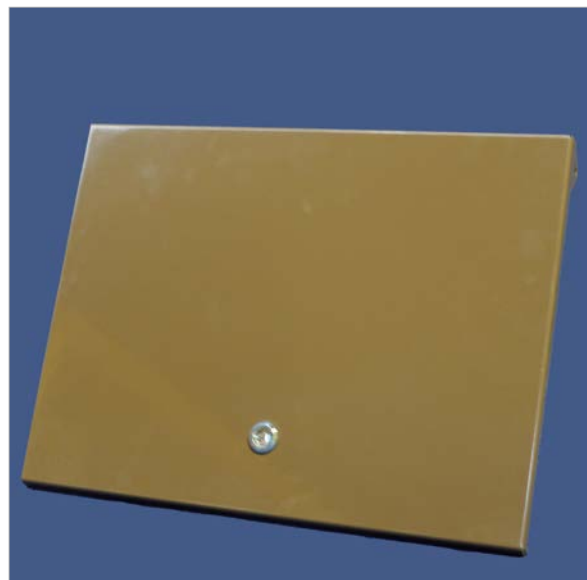
Overall size (mm): 479 W x 362mm L



Aluminium Lid For The National Grid Semi-Buried Box

Model Number: 910004 **Product Code:** IS5004

Overall size (mm): 479 W x 362 L



Meter Box Repair Solutions

Lid For The Connect Semi-Buried Gas Meter Box

Model Number: G60054 **Product Code:** IS0030

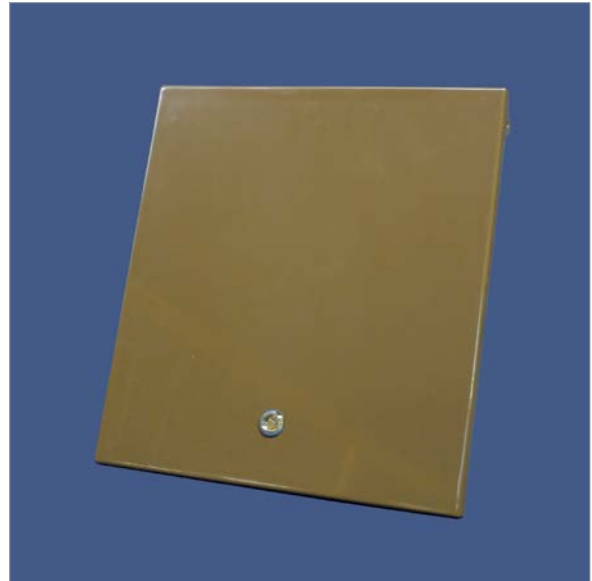
Overall size (mm): 415 W x 440 L



Aluminium Lid For The Connect Semi-Buried Gas Meter Box

Model Number: 910005 **Product Code:** IS5005

Overall size (mm): 415 W x 440 L



Lid For The Mitras™ Semi-Buried Gas Meter Box

Model Number: G60040 **Product Code:** IS0051

Overall size (mm): 410 W x 420 D



Lid For The Continental Semi-buried Gas Meter Box

Model Number: 208097 **Product Code:** IS0076

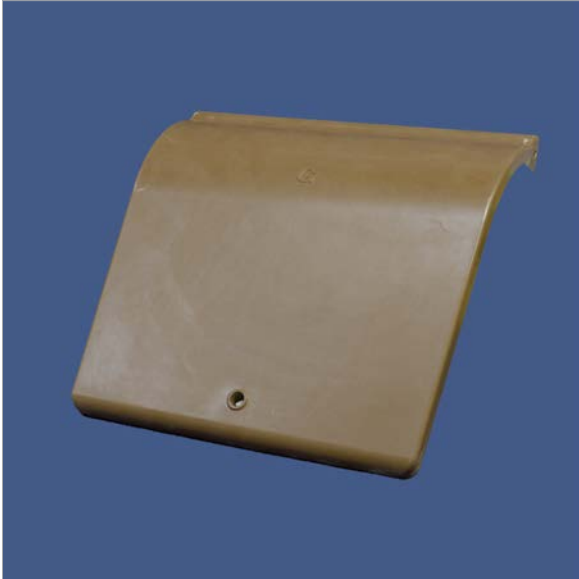
Overall size (mm): 460 W x 410 D



Lid For The Multibox Gas Meter Box

Model Number: G60035 **Product Code:** IS0058

Overall size (mm): 460 W x 400 H



Lid For The Unibox Gas Meter Box

Model Number: G02018 **Product Code:** IS0054

Overall size (mm): 480 W x 320 H



Lid For The White Unibox Gas Meter Box

Model Number: G02019 **Product Code:** IS0055

Overall size (mm): 480 W x 320 H



Meter Box Colour

Whilst every effort has been made to display a true likeness of our products within this brochure, the actual colour of our products may vary from that shown here.

Installation of Meter Boxes

Our products contain fitting instructions for the basic fitting of the meter box only, they do not include fitting instructions for the meter and ancillary products, or for any form of supply connection. If you are unsure about the correct fitting of the meter box, please do not attempt to fit it.

Building and Construction Products

Whilst we endeavour to achieve a high quality finish, due to the nature of our materials and the manufacturing and storage processes, our products may exhibit small surface imperfections that do not affect their performance.

Meter Box Repair Solutions

Replacement Doors : Electricity

MCL have developed the most comprehensive range of upgrade and repair solutions for the Mitras™ meter boxes and for the vast majority of fitted meter boxes that are now obsolete and have been discontinued in mainstream manufacture. MCL offer a comprehensive range of replacement doors for electricity meter boxes including replacement Permali doors.

Gas and electricity meter boxes are different in their specification so the doors must be replaced using the correct type. Check that the box is intact where the door hangs as, if not, an overbox that covers the damaged box can be fitted to avoid the costly removal and reinstallation of the meter.

Choose the correct replacement door by measuring the existing door, or door opening, if it is missing. All replacement doors are supplied with the latch and hinges fitted to the door and with a meter box key.

Description	Size (Width x Height)	Hinge Type	Side Hinged	Model Ref	Product Code
Door For The Mitras Recessed Electricity Meter Box	383mm x 550mm	Pin	Left-Hand	M00034	IS00111
Door For The Hepworth Recessed Electricity Meter Box	380mm x 545mm	Pin	Right-Hand	M06006	IS0063
Door For The Brown Mitras Recessed Electricity Meter Box	383mm x 550mm	Pin	Left-Hand	M00041	IS0052
Door For the Medium Permali Recessed Meter Box	427mm x 624mm	Pin	Right-Hand	M00040	IS0019
Door For The Medium Manweb Electricity Meter Box	426mm x 625mm	Butt	Right-Hand	M10008	IS0013
Door For The Medium ROI Recessed Electricity Meter Box	426mm x 625mm	Pin	Right-Hand	M35045	IS0068
Door For The Small Permali Recessed Electricity Meter Box	365mm x 557mm	Pin	Right-Hand	M00039	IS0010
Door For The Shallow Recessed Electricity Meter Box	363mm x 553mm	Butt	Right-Hand	M40014	IS0018
Door For The Large Permali & Mitras Electricity Meter Box	509mm x 737mm	Pin	Right-Hand	M00037	IS0012
Aluminium Lid For The National Grid Semi-Buried Box	253mm x 784mm	Pin	Left-Hand	M35076	IS0017
Door For The MK1 Surface Mounted Electricity Meter Box	400mm x 600mm	Butt	Left-Hand	M30021	IS0014
Door For The MK1 Surface Mounted Electricity Meter Box	400mm x 600mm	Pin	Left-Hand	M30022	IS0015
Door For The MK2 Surface Mounted Electricity Meter Box	340mm x 380mm	Pin	Right-Hand	M60005	IS0064

Door For The Mitras™ Recessed Electricity Meter Box

Model Number: M00034 **Product Code:** IS00111

Overall size (mm): 383 W x 550 H

A replacement door for the current standard box, supplied complete with latch and pin hinges fitted. Suitable also for the MK3 Surface Mounted Electric Meter Box M06004.



Door For The Brown Mitras™ Recessed Electricity Meter Box

Model Number: M00041 **Product Code:** IS0052

Overall size (mm): 383 W x 550 H

Replacement door for the brown flush-fitted electric meter box. Supplied with latch and pin hinges fitted.



Door For The Hepworth Recessed Electricity Meter Box

Model Number: M06006 **Product Code:** IS0063

Overall size (mm): 380 W x 545 H

A right-hand hung version of the M00034. With latch and hinges fitted.



Door For The Shallow Recessed Electricity Meter Box

Model Number: M40014 **Product Code:** IS0018

Overall size (mm): 363 W x 553 H

Supplied with latch and butt hinges fitted.

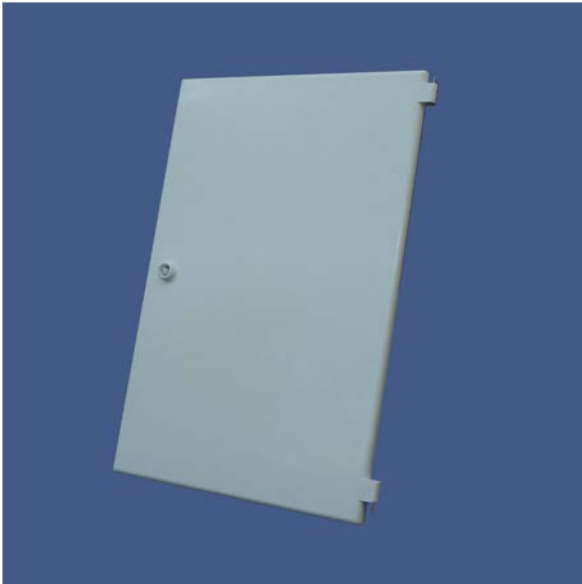


Meter Box Repair Solutions

Door For The Small Permalit Recessed Electricity Meter Box

Model Number: M00039 **Product Code:** IS0010

Overall size (mm): 365 W x 557 H



Door For The Medium ROI Recessed Electricity Meter Box

Model Number: M35045 **Product Code:** IS0068

Overall size (mm): 426 W x 625 H

Door for the recessed ROI Electric meter box supplied with pin hinges and latch. Also the replacement for the Medium Manweb box M35047 since modifications in 2012.



Door For the Medium Permalit Recessed Meter Box

Model Number: M00040 **Product Code:** IS0019

Overall size (mm): 427 W x 624 H



Door For The Medium Manweb Electricity Meter Box

Model Number: M10008 **Product Code:** IS0013

Overall size (mm): 426 W x 625 H

Supplied with latch and butt hinges fitted.



Door For The Large Permalite & Mitras™ Electricity Meter Box

Model Number: M00037 **Product Code:** IS0012

Overall size (mm): 509 W x 737 H

Supplied with latch and pin hinges fitted.



Door For The Slimline Recessed Electricity Meter Box

Model Number: M35076 **Product Code:** IS0017

Overall size (mm): 253 W x 784 H

Supplied with latch and pin hinges fitted.



Door for the Mk1 Surface Mounted Electricity Meter Box (butt hinges)

Model Number: M30021 **Product Code:** IS0014

Overall size (mm): 400 W x 600 H

Supplied with latch and butt hinges fitted.



Door for the Mk1 Surface Mounted Electricity Meter Box (pin hinges)

Model Number: M30022 **Product Code:** IS0015

Overall size (mm): 400 W x 600 H

Supplied with latch and butt hinges fitted.



Meter Box Repair Solutions

Covers & Overboxes

MCL have developed the most comprehensive range of upgrade and repair solutions for the Mitras™ meter boxes and for the vast majority of fitted meter boxes that are now obsolete and have been discontinued in mainstream manufacture. MCL offer a comprehensive range of overboxes for use where the meter box itself is damaged, avoiding the costly removal and reinstallation of the meter.

Measure the extremities of the existing meter box to choose the most suitable overbox. the aluminium overboxes are suitable for both gas and electricity meter boxes. Covers and overboxes are supplied with necessary fixings for installation and with a meter box key.

Description	Size	Model Ref	Product Code
Aluminium Universal Overbox	660mm W x 810mm H x 100mm D	910001	IS5001
Aluminum Architrave Overbox	414mm W x 600mm H x 70mm D	910002	IS5002
Brown Aluminium Architrave Overbox	414mm W x 600mm H x 70mm D	910021	IS5055
Aluminium Slimline Overbox	285mm W x 840mm H x 75mm D	910012	IS5039
Aluminium Face-fix Overbox	525mm W x 725mm H x 50mm D	910013	IS5040
Large Aluminum Face-Fix Overbox	580mm W x 800mm H x 50mm D	910015	IS5044
White Woodgrain Effect Overbox	430mm W x 600mm H x 70mm D	900016	IS5021
GRP Flush Fitted Electricity Meter Box Cover	485mm W x 685mm H x 40mm D	M35064	IS0016
Cladded Architrave Aluminium Overbox	550mm W x 630mm H x 100mm D	910023	IS5076
Architrave Aluminium Overbox	430mm W x 620mm H x 100mm D	910024	IS5077
Aluminium Surface Mounted Gas Cover	475mm W x 520mm H x 235mm D	910003	IS5003
Aluminium Surface Mounted Electricity Cover	540mm W x 680mm H x 250mm D	910011	IS5038
Aluminium 3 Phase overbox	560mm W x 790mm H x 230mm D	910022	IS5074
Mitras MK1 Surface Mounted Gas Meter Box (cover only no back plate)	450mm W x 506mm H x 227mm D	G30060/70	IS0003
Semi-buried Gas Meter Box Overbox	600mm W x 360mm H x 450mm D	910023	IS5075

Aluminum Architrave Overbox

Model Number: 910002 **Product Code:** IS5002

Overall size (mm): 414 W x 600 H x 70 D

The aluminium overbox incorporates flanges that are fixed to the inside of a standard recessed gas or electricity box meter.

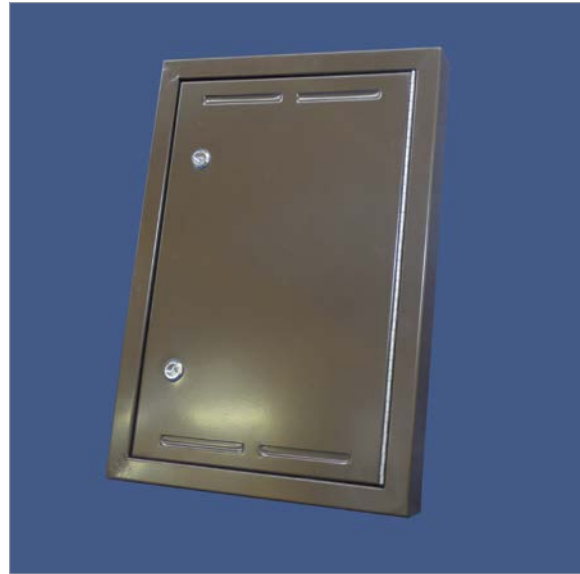


Brown Aluminium Architrave Overbox

Model Number: 910021 **Product Code:** IS5055

Overall size (mm): 414 W x 600 H x 70 D

A brown version of the IS5002.



Architrave Aluminium Overbox

Model Number: 910024 **Product Code:** IS5077

Overall size (mm): 430 W x 620 H x 100 D

An aluminium over box that fixes to the inside of an existing meter box.



Cladded Architrave Aluminium Overbox

Model Number: 910023 **Product Code:** IS5076

Overall size (mm): 550 W x 630 H x 100 D

An aluminium overbox that incorporates flanges that are fixed to the inside of an existing recessed gas or electricity meter box.



Meter Box Repair Solutions

Aluminium Face-fix Overbox

Model Number: 910013 **Product Code:** IS5040

Overall size (mm): 525 W x 725 H x 50 D

Smaller than the Universal overbox, this also fixes to the wall surrounding a recessed meter box.



Large Aluminium Face-Fix Overbox

Model Number: 910015 **Product Code:** IS5044

Overall size (mm): 580 W x 800 H x 50 D

An aluminium overbox that fixes to the wall surrounding a recessed meter box.

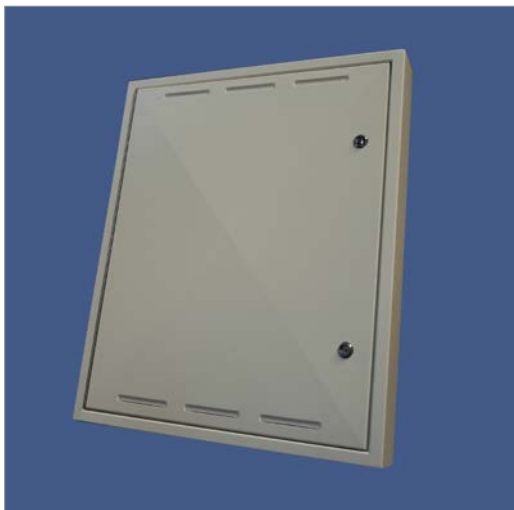


Aluminium Universal Overbox

Model Number: 910001 **Product Code:** IS5001

Overall size (mm): 660 W x 810 H x 100 D

Aluminium over-box is fixed directly to the brickwork surrounding a damaged recessed meter box.



Aluminium Slimline Overbox

Model Number: 910012 **Product Code:** IS5039

Overall size (mm): 285 W x 840 H x 75 D

This aluminium overbox incorporates flanges that are fixed to the inside of a Slimline electricity meter box.



Aluminium Surface Mounted Gas Cover

Model Number: 910003 **Product Code:** IS5003

Overall size (mm): 475 W x 520 H x 235 D

This aluminium cover is designed to hook over an existing back plate.



Aluminium 3 Phase Overbox

Model Number: 910022 **Product Code:** IS5074

Overall size (mm): 560 W x 790 H x 230 D

An aluminium overbox designed to fit a 3phase surface mounted box.



Aluminium Surface Mounted Electricity Cover

Model Number: 910011 **Product Code:** IS5038

Overall size (mm): 540 W x 680 H x 250 D

An aluminium overbox to cover a surface mounted electricity or gas meter box, top fixing.



Aluminium Surface Mounted Electricity Cover

Model Number: 910027 **Product Code:** IS5079

Overall size (mm): 420 W x 620 H x 250 D

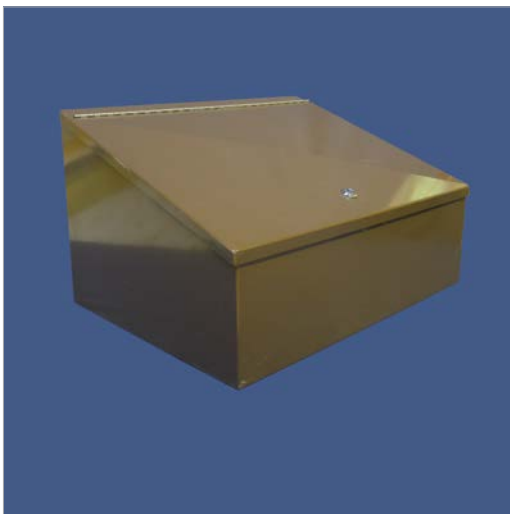


Semi-buried Gas Meter Box Overbox

Model Number: 910023 **Product Code:** IS5075

Overall size (mm): 600 W x 360 H x 450 D

An aluminium overbox designed to go over a semiburied gas meter box that has been damaged or vandalised.

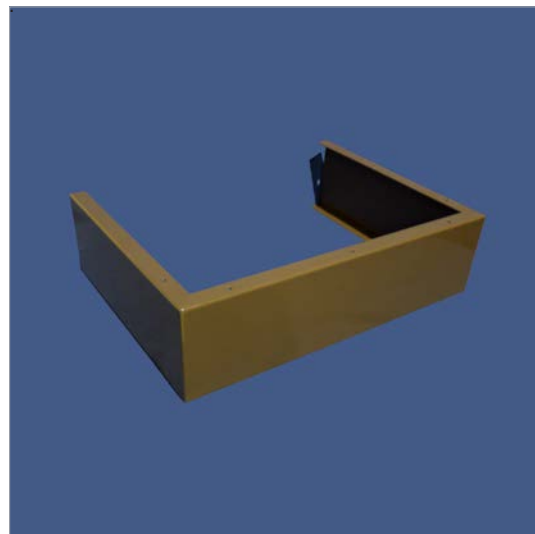


Semi-buried Overbox Extension

Model Number: 910026 **Product Code:** ISO5078

Overall size (mm): 600 W x 160 H x 450 D

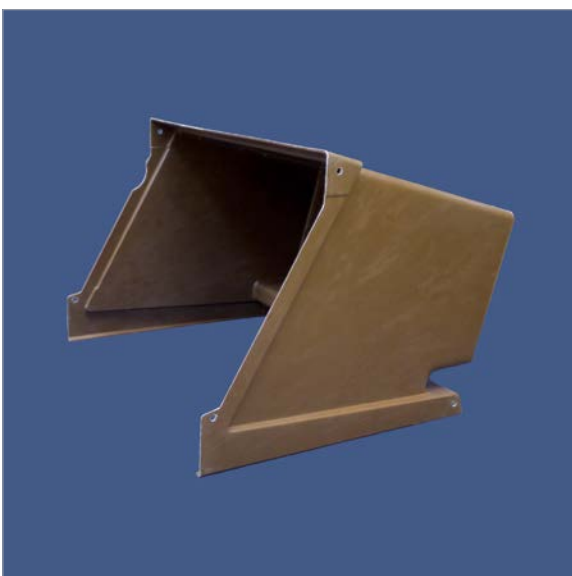
To increase the height of the IS5078 to cover a Multibox or Unibox



National Grid ETM Extension Replacement Cover

Model Number: MG60041 **Product Code:** IS0089

Overall size (mm): 475 W x 530 H x 340 D



Meter Box Colour

Whilst every effort has been made to display a true likeness of our products within this brochure, the actual colour of our products may vary from that shown here.

Installation of Meter Boxes

Our products contain fitting instructions for the basic fitting of the meter box only, they do not include fitting instructions for the meter and ancillary products, or for any form of supply connection. If you are unsure about the correct fitting of the meter box, please do not attempt to fit it.

Building and Construction Products

Whilst we endeavour to achieve a high quality finish, due to the nature of our materials and the manufacturing and storage processes, our products may exhibit small surface imperfections that do not affect their performance.

Meter Box Repair Solutions

Keys & Fixings

MCL have developed the most comprehensive range of upgrade and repair solutions for the Mitras™ meter boxes and for the vast majority of fitted meter boxes that are now obsolete and have been discontinued in mainstream manufacture. MCL offer a comprehensive range of keys and accessories.

The meter box keys are universal, any version will open any triangular style latched meter box.

A meter box can frequently be repaired by replacing the latch or hinge, they are easy to fit and a cheap solution. Replacement latches are easy to fit, all are operated by the standard meter box key which turns the triangular shaped spindle once fitted to the door. Replacement hinges are also available, along with various meter box accessories.

Pair of Gas Meter Box Keys

Model Number:
203001

Product Code:
IS0007



Pair of Electricity Meter Box Keys

Model Number:
203007

Product Code:
IS0008



Meter Box Repair Kit

Model Number:
KT0025

Product Code:
IS0025



Heavy Duty Meter Box Key

Model Number:
203004

Product Code:
IS0021



Pair of Long Reach Meter Box Keys

Model Number:
203003

Product Code:
IS0009



Pair of Butt Hinges

Model Number:
KT0011

Product Code:
IS0034



Semi-Buried Gas Meter Box Hinges

Model Number:
KT0010

Product Code:
IS0035



Set of Pin Hinges

Model Number:
KT0004

Product Code:
IS0033



Unibox Hinges

Model Number:
KT0034

Product Code:
IS0070



Meter Box Latch Kit

Model Number:
KT0008

Product Code:
IS0020



Metal Meter Box Latch Kit

Model Number:
KT0035

Product Code:
IS0075



Latch Plate

Model Number:
202002

Product Code:
IS0073



Spigot

Model Number:
910012

Product Code:
IS0037



Semi-Buried Gas Meter Box Fixing Kit

Model Number:
KT0009

Product Code:
IS0036



Cap Adaptor

Model Number:
614009

Product Code:
IS0024



Who We Are

We are one of:



**Securbilt™
LPCB SR3
kiosks**



**RapidSTACK™
B125 & D400
chamber systems**



**Railway
carriage Interior
components**



Corbilt™ kiosks



**RapidSTACK+™
B125 & C250
chamber systems**



GRP door skins



**Gas Care
Services GC™
gas meter
housings**



GRP roadplate



**Enclosures
for industrial
lighting**



**Mitrastm™ meter
boxes**



**GRP footway
board**



**Enclosures
for industrial
telephones**

MCL are one of Europe's leading manufacturers and suppliers of engineered composite products for the utility, construction and infrastructure markets.

Production capabilities and expertise of four group companies take products from innovative new concept designs and prototypes to high volume manufacturing of precision components, and assembled products, for highly demanding environments.

Through our innovative processes, bespoke design and development gateway, we can deliver collaborative design projects on time, every time. Due to the groups' unique vertical value stream, we can develop new materials and produce cost effective samples prior to fully manufactured tool commissioning utilising:

- Design for Manufacture - DFM, FEA, DFMEA processes including 2D/3D CAD modelling services
- Structural calculations
- Design verification
- Validation techniques

This ensures that we always meet customer exacting requirements and achieve the best added value for all partners.

MCL evolve an idea from

- Design to prototype
- To production tooling
- To a product in its moulded state
- To a fully finished, assembled, complete item

MCL have included QCD considerations within our quality management system and our scope of certification including design and development processes. These processes satisfy the requirements of ISO9001 and, combined with third party certification and our internal audit processes, ensure we maintain a focus on continual improvement, maintaining compliance and the needs of our customer.





MCL Composites, based in Biddulph Moor, Staffordshire, who developed the first Mitras™ box in 1975, have been at the forefront of composite design, manufacture and supply solutions since the 1960's.

During this time we have supplied products to a wide range of customers and industries and have developed expertise and capabilities in various moulding and finishing techniques:

- Compression moulding
- Resin-transfer moulding
- Injection moulding
- Vacuum fusion moulding
- CNC operation
- Final assembly tier 1/2/3
- Wet spray painting

A division of MCL Composites, MCL Infrastructure are specialists in underground access chambers offering solutions that are cutting edge and highly cost effective.

Working daily in partnership with design consultants, building contractors and civil engineers in many sectors throughout the UK and Europe, MCL are at the forefront of innovative progress supplying:

- Comprehensive range of underground access chambers
- Composite manhole covers
- Ductile iron manhole covers
- Galvanised steel manhole covers
- Composite pole retention sockets
- Composite road plates, footway boards and ramps

MCL Industrial Enclosures produce larger kiosks in our sizeable facilities in Fenton, Stoke-on-Trent, utilising a number of different low to medium volume manufacturing techniques.

The Gas Care Services GC™ kiosks range from a small GC2 kiosk (for larger houses) to a large walk-in kiosk suitable for public, civic and industrial premises. Including LPCB 1175 SR3 GRP housings, MCL manufacture bespoke kiosks up to 12m by 3m primarily for the electricity, gas and water sectors with optional

- Brick/stone/textured or glossy finish
- Non-metallic colour of choice
- Gas tight rooms, partitioning walls
- Structural bases, hinged transoms
- Range of fittings and accessories, electrical installation
- Removable roofs, sliding hatches
- One piece or flat-pack delivery
- Design, manufacture & installation
- CSCS certified installation team

MCL Compounds have the capacity to manufacture over 6,000 tonnes of polyester dough moulding compound for its sister company MCL Composites, for use in over 40% of the MCL group's range of products.

- Capacity 6000 tonnes per annum
- Approved fire performance grades
- Semi-automated process
- ISO9001:2008, Achilles approved
- Batch control and lot traceability
- Comprehensive material development and trial process



**MCL METERBOXES &
MCL HEAD OFFICE**

New Street
Biddulph Moor
Staffordshire
ST8 7NL

Tel: 01782 375450
Fax: 01782 522652
Email: sales@mcl-grp.co.uk

Market Leading Products for Utility, Infrastructure and Construction