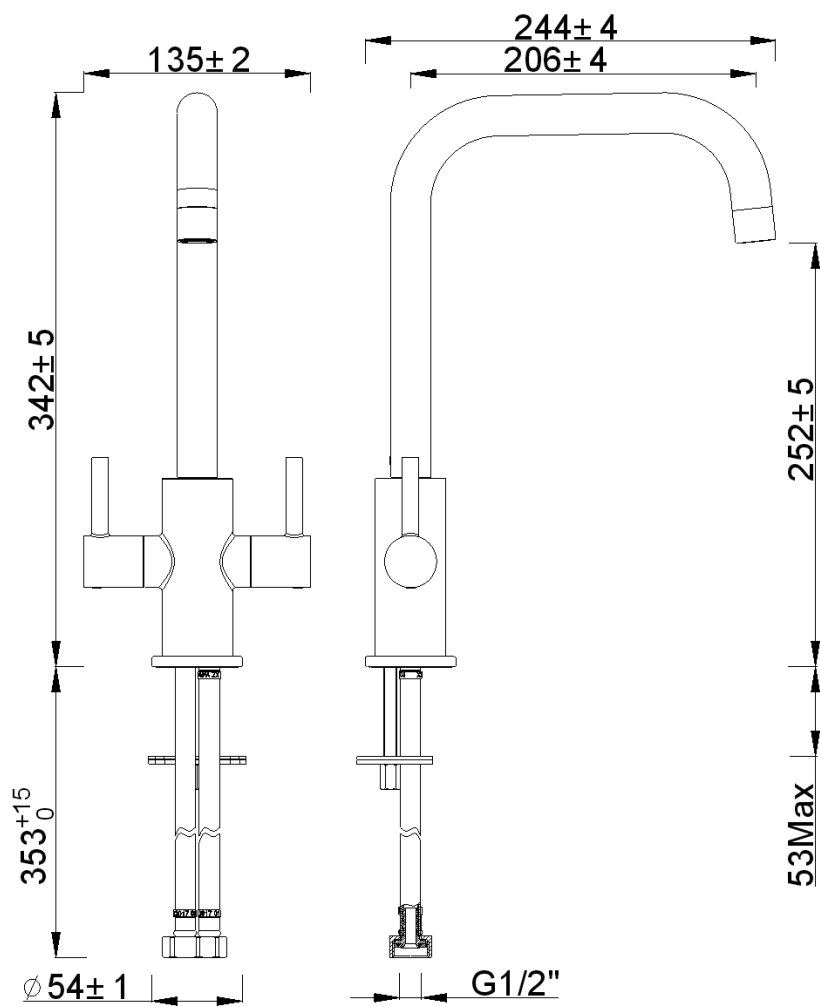


# 934993- Colmar Monobloc Sink Mixer Chrome

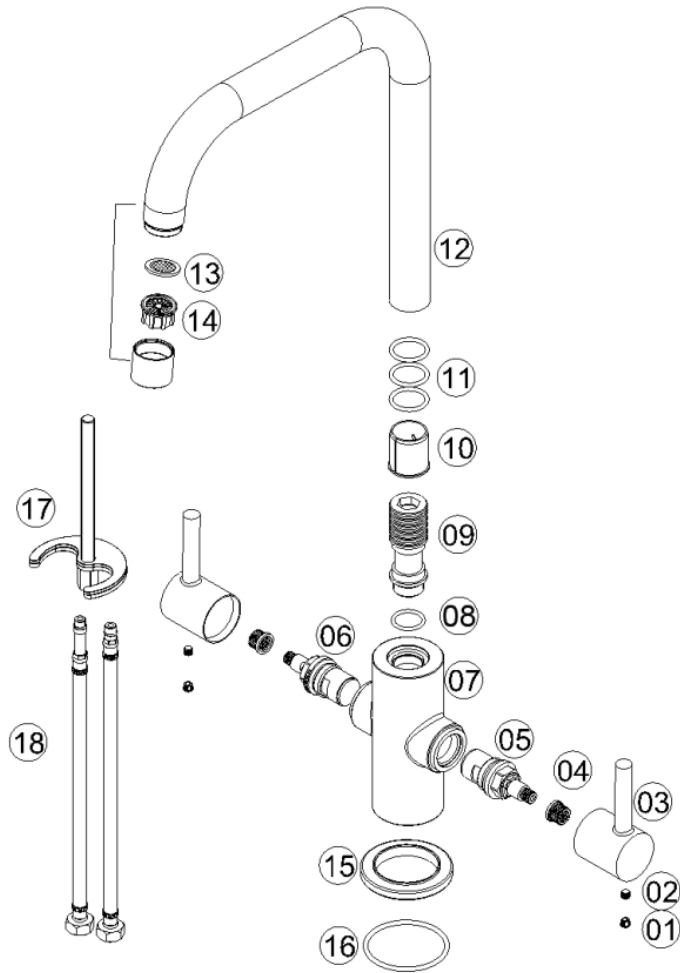
Useful Information	
Minimum operating pressure	0.2bar
Maximum operating pressure	5bar
Guarantee length	5 years



## Technical Diagram



## Exploded Diagram



Item Number	Supplier Ref	Description	Quantity	Spares Available
1	P67	Indice	2	Yes
2	SC5-4SN	Screw	2	Yes
3	177008-H	Handle	2	Yes
4	SA03	Spline Adaptor	2	Yes
5	VS01-C20 C NP	1/2" CD Valve	1	Yes
6	VS01-C20 H NP	1/2" CD Valve	1	Yes
7	177008-01	Tap Body	1	No
8	OR109	O ring	1	No
9	177005-N1	Adaptor	1	No
10	177005-N2	Block Ring	1	Yes
11	OR101	O ring	3	Yes
12	177008-02	Spout	1	No
13	A14-01X	Washer	1	Yes
14	A13-02	Aerator	1	Yes
15	N30-G	Flange	1	Yes
16	N25-G	Washer	1	Yes
17	N9505	Fixing kit	1	Yes
18	BZG10-1/2"-400	Braided Connectors	1	Yes

## Flow Rates

Pressure (bar)	Flow rate matrix		
	Hot	Cold	Mixer
	With aerator		
0.1	2.63	2.76	5.08
0.2	4.32	4.42	8.40
0.3	5.63	5.85	10.19
0.4	6.73	6.76	11.68
0.5	7.55	7.56	13.57
1.0	10.91	10.82	18.98
1.5	13.68	13.14	23.99
2.0	15.49	15.37	28.04
3.0	18.96	18.96	33.83
4.0	22.56	22.02	39.68
5.0	25.14	24.76	43.68

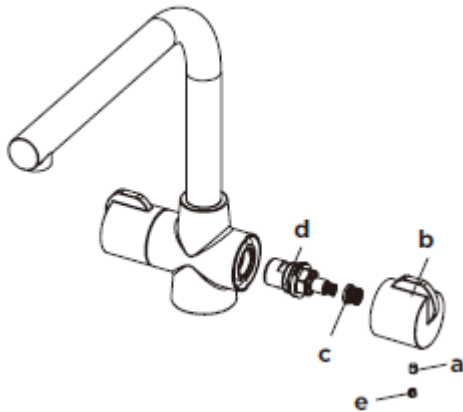
## FAQ

### **What should I do if my tap is dripping/leaking?**

Cleaning the valve (if water dripping from tap)

Before carrying out any maintenance, turn off the mains water supply. If unsure contact a qualified tradesman.

1. Remove the cap(e), grub screw(a), handles(b) and spindle(c).
2. Remove the valve(d) using a suitable spanner, clean thoroughly under cold water to remove any build up of limescale or debris.
3. If necessary replace the valve.
4. Replace the valve(d) into the body, tighten the valve using a suitable spanner.
5. Replace the spindle(c) and handles(b), tighten the grub screw(a).
6. Re-fit the lever or cap(e) to handle(b).



### **What does the Guarantee Cover?**

The Guarantee Covering leakage, manufacturing defects and Chrome plating.

The guarantee does not cover:

- Damage or defects caused by:
  - general wear and tear (including special non-chrome finishes; components such as filters, seals, 'O'rings and washers)
  - incorrect installation
  - repair using non- PPI parts
  - accidental or wilful misuse
  - corrosion and the use of inappropriate cleaning products.
  - system debris including the build up of limescale (which can be controlled through regular servicing and maintenance).
- Compensation for loss of use of the product or consequential loss of any kind.