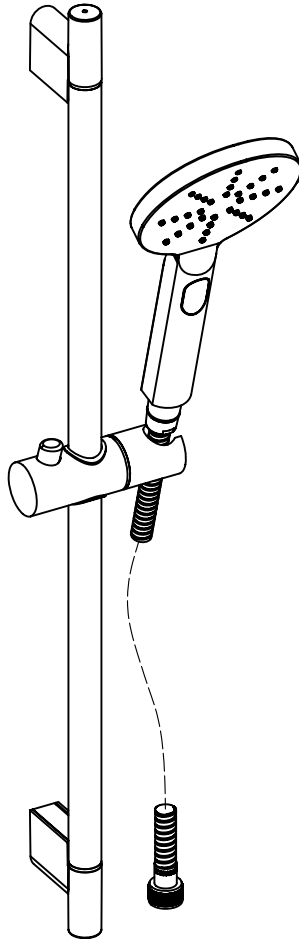


Round Riser Rail

Fitting instructions

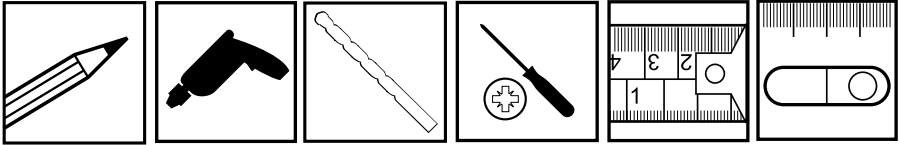


Please keep these instructions for future reference and request of replacement parts.

We have taken great care to ensure that this product reaches you in perfect condition. However should any parts be damaged or missing please contact your point of purchase. This does not affect your statutory rights. In addition if you require replacement parts your point of purchase will be happy to assist.

Contents	Page
1. Tools Required	3
2. Parts Supplied	3
3. Before Your Start	3
4. Installation	3-4
5. Aftercare	4

Tools Required (Tools not supplied)



Parts Supplied

NO.	Description	Qty
1	Holder Shell	2
2	Wall Screws	2
3	Holder Seat	2
4	Wall Plugs	2
5	Rail	1
6	Slider	1
7	Shower Hose	1
8	Handset	1

Before Your Start

This shower kit should be installed in compliance with Water Regulations. For further details contact your Local Water Authority.

- (a) Identify all components and check pack contents.
- (b) Turn off water mains supply.

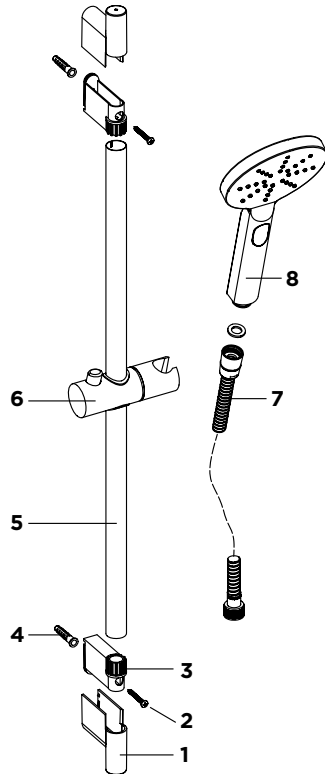
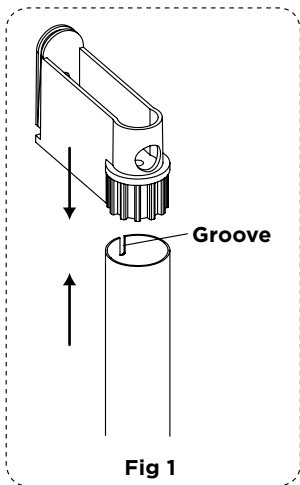
Instructions

1. Remove Holder Shell (1) from the Holder assembly.
2. Place Holder Seat (3) on each end of the Rail (5).

Note: The groove of rail should align with the centry of the holder seat, facing the wall. See Fig. 1.

3. Hold this assembly to the wall and mark drill holes on wall, ensure that the Shower Hose (7) will not be over extended when the Slider(6) is in its highest position.

4. Once holes are drilled, insert Wall Plugs (4).
5. Fit Holder Seat (3) to the wall using Wall Screws (2) and tighten.
6. Push Holder Shell (1) to Holder Seat (3) from top and bottom.
7. Fit Slider (6) to Rail (5). Note: Handset holder on the slider must be positioned on the right hand side.
8. Insert Hose Seal to come end provided in pack and connect to Handset (8) and tighten. DO NOT OVER TIGHTEN.
9. Insert second seal into opposite end of hose and connect to outlet of the bar valve. DO NOT OVER TIGHTEN.



Aftercare

Whilst modern plating techniques are used in the manufacture of these fittings, the plating will wear if not cleaned properly. The safest way to clean your product is to wipe with a soft damp cloth. Stains can be removed using washing up liquid. All cleaning powders and liquids will damage the surface of your fitting even the non-scratch cleaners.