



# ULTIMA+



ULTIMA+ not only offers a finely textured and durable surface with a brighter “blue-white” colour and high light reflectance, it also offers a balance of both sound absorption and sound attenuation as well as being C2C Bronze certified.

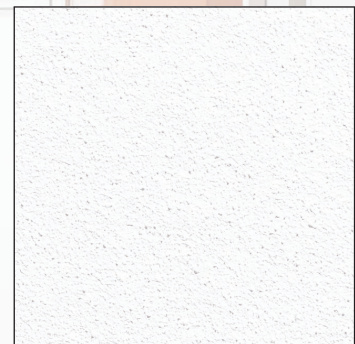
### Key features

- Good sound absorption: up to 0.75 (H)  $\alpha_w$
- Very high light reflectance: 87%
- Reinforced scratch resistant face
- Better finish and more durable edges
- C2C Bronze certified / ISO 5 / A+
- 30 year system guarantee
- Available with SL2 MicroLook 90 edge detail

### Application areas

Ideal for meeting rooms or waiting areas  
ULTIMA+ Planks: ideal for both open areas and corridors.

OFFICE – Woningbouwvereniging Compagn (NL)  
ULTIMA+ Vector



Inspiring Great Spaces®

**Armstrong®**  
CEILING SOLUTIONS

EDGE DETAIL	BOARD	TEGULAR	MICROLOOK 90	VECTOR	SL2																																																						
<b>THICKNESS (mm)</b>	<b>19</b>	<b>19</b>	<b>19</b>	<b>19</b>	<b>19</b>																																																						
<b>MODULES (mm)</b>	600 x 600 ..... 7661M 675 x 675 ..... 7662M 1200 x 600 ..... 7663M	600 x 600 ..... 7664M 675 x 675 ..... 7665M 1200 x 600 ..... 7666M	500 x 500 ..... 7673M 600 x 550 ..... 7713M 600 x 600 ..... 7674M 675 x 675 ..... 7675M 1200 x 300 ..... 7676M 1200 x 600 ..... 7677M 1500 x 600 ..... 7703M	600 x 600 ..... 7681M	1500 x 300 ..... 7699M 1720 x 300 ..... 7700M 1800 x 300 ..... 7701M 2500 x 300 ..... 7702M																																																						
<b>SUSPENSION SYSTEMS</b>	Prelude 24 XL <sup>2</sup> / TLS Prelude 24 Sixty <sup>2</sup> XL <sup>2</sup> / TLS	Prelude 24 XL <sup>2</sup> / TLS Prelude 24 Sixty <sup>2</sup> XL <sup>2</sup> / TLS	Prelude 15 TL / XL <sup>2</sup> Interlude HRC XL <sup>2</sup> Silhouette 6mm XL <sup>2</sup>	Prelude 24 XL <sup>2</sup> / TLS Prelude 24 Sixty <sup>2</sup> XL <sup>2</sup> / TLS	System Z - T-Bar System Z - Z-Bar System Z Corridor - T-Bar System Z Corridor - Z-Bar																																																						
<b>COLOURS</b>	 Global White																																																										
<b>SUSTAINABILITY</b>																																																											
	<sup>1</sup> Depends on thickness, edge detail and size of tile. <sup>2</sup> Except Vector: A																																																										
<b>ACOUSTICS</b>	<div style="display: flex; justify-content: space-around; align-items: flex-start;"> <div style="text-align: center;">   <small>EN ISO 10848-2 &amp; EN ISO 717-1</small> </div> <div style="text-align: center;">   <small>EN ISO 140-3 &amp; EN ISO 717-1</small> </div> <div style="text-align: center;">   <small>EN ISO 354 &amp; EN ISO 11654</small> </div> </div> <table border="1" style="width: 100%; margin-top: 10px;"> <thead> <tr> <th rowspan="2"></th> <th rowspan="2">D<sub>nfw</sub></th> <th rowspan="2">R<sub>w</sub></th> <th rowspan="2">α<sub>w</sub></th> <th rowspan="2">Class</th> <th rowspan="2">NRC</th> <th colspan="6">Hz α<sub>p</sub></th> </tr> <tr> <th>125</th> <th>250</th> <th>500</th> <th>1000</th> <th>2000</th> <th>4000</th> </tr> </thead> <tbody> <tr> <td>• Board, Tegular, MicroLook 90</td> <td><b>36 dB</b></td> <td><b>18 dB</b></td> <td><b>0.70(H)</b></td> <td>C</td> <td>0.75</td> <td>0.40</td> <td>0.50</td> <td>0.65</td> <td>0.85</td> <td>0.95</td> <td>1.00</td> </tr> <tr> <td>• Vector</td> <td><b>33 dB</b></td> <td>-</td> <td><b>0.75(H)</b></td> <td>C</td> <td>0.75</td> <td>0.35</td> <td>0.55</td> <td>0.65</td> <td>0.80</td> <td>0.95</td> <td>0.90</td> </tr> <tr> <td>• SL2</td> <td><b>40 dB</b></td> <td>-</td> <td><b>0.65(H)</b></td> <td>C</td> <td>0.65</td> <td>0.35</td> <td>0.45</td> <td>0.55</td> <td>0.75</td> <td>0.90</td> <td>1.00</td> </tr> </tbody> </table>						D <sub>nfw</sub>	R <sub>w</sub>	α <sub>w</sub>	Class	NRC	Hz α <sub>p</sub>						125	250	500	1000	2000	4000	• Board, Tegular, MicroLook 90	<b>36 dB</b>	<b>18 dB</b>	<b>0.70(H)</b>	C	0.75	0.40	0.50	0.65	0.85	0.95	1.00	• Vector	<b>33 dB</b>	-	<b>0.75(H)</b>	C	0.75	0.35	0.55	0.65	0.80	0.95	0.90	• SL2	<b>40 dB</b>	-	<b>0.65(H)</b>	C	0.65	0.35	0.45	0.55	0.75	0.90	1.00
	D <sub>nfw</sub>	R <sub>w</sub>	α <sub>w</sub>	Class	NRC							Hz α <sub>p</sub>																																															
						125	250	500	1000	2000	4000																																																
• Board, Tegular, MicroLook 90	<b>36 dB</b>	<b>18 dB</b>	<b>0.70(H)</b>	C	0.75	0.40	0.50	0.65	0.85	0.95	1.00																																																
• Vector	<b>33 dB</b>	-	<b>0.75(H)</b>	C	0.75	0.35	0.55	0.65	0.80	0.95	0.90																																																
• SL2	<b>40 dB</b>	-	<b>0.65(H)</b>	C	0.65	0.35	0.45	0.55	0.75	0.90	1.00																																																
<b>FIRE REACTION</b>		EEA Euroclass A2-s1, d0 <small>EN 13501-1</small>			RUS KM1 (G1, V1, D1, T1) <small>FZ 123</small>																																																						
<b>OTHER PERFORMANCES &amp; FEATURES</b>	87%  λ = 0.052 W/m K <small>EN 12667 &amp; ISO 8301</small>	95% RH  5.0 kg/m <sup>2</sup> (Board, Tegular, MicroLook 90) 5.6 kg/m <sup>2</sup> (SL2) 5.8 kg/m <sup>2</sup> (Vector)	ISO 5 <small>ISO 14644-1</small>   	    	30 YEAR system guarantee BIM READY																																																						
<b>CUSTOM OPTIONS</b>	 Dimensions																																																										